



# PRODUCT CATALOG



**Pendants/Portable Transmitters**



**Coaster Paging System**



**Desktop Paging**



**Rechargeable Pagers**



**Paging Transmitter**



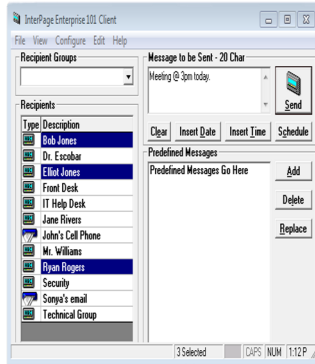
**Staff Paging Systems**



**Alpha & Numeric Pagers & LED Display**

Web Site: [www.iplp.com](http://www.iplp.com) Email: [sales@iplp.com](mailto:sales@iplp.com)  
 Tel: 772-247-7899 or 1-800-992-1000 Fax: 772-266-9783  
1241 SE Indian Street Ste. 102, Stuart, FL 34997

## ENTERPRISE 101-NETWORK PAGING SOFTWARE



### FEATURES

- Send custom messages to on-site pagers, cell phones, PDA's, and Wide Area Pagers
- Message retrieval and message history
- Reminder messages and schedules calls
- Simple "Click & Point" user interface
- Reduces the number of calls to mobile phones

PART-NUMBER	DESCRIPTION	
<b>6000T</b>	<b>Enterprise 3 Concurrent User License with Z-100 UHF TX</b> (does not include web interface)	
<b>6000</b>	<b>3 User Software</b>	
<b>6100</b>	<b>Enterprise Unlimited User</b> (UL Software Only)	
<b>6100T</b>	Enterprise Unlimited User License <b>with Z-100 UHF TX</b>	
<b>6100T</b>	Enterprise Unlimited User License <b>with Z-500 UHF TX</b>	
<b>6100T</b>	Enterprise Unlimited User License with Z-500PRO UHF TX NOTE: Unlimited User License Includes Web Interface	
<b>6003</b>	Enterprise Email Interface (optional) Enterprise 101 Email Interface is both an email client (able to send emails) and an email server (able to receive email for dispatch to mobile recipients).	
<b>6100UPG</b>	Upgrade to Latest Version (Within 1 year)	
	INTERFACE PAGING SOFTWARE	
<b>6500</b>	Interface Paging Software (includes 3 inputs/outputs)	
<b>6502</b>	Interface Paging Software Upgrade (adds 1 input/output)	

## USB-ALPHANUMERIC MESSENGER SINGLE USER SOFTWARE



### FEATURES

- Messages: Alphanumeric & Numeric
- Paging Format: POCSAG
- RF Output Power: 150mw
- Freq: 410-490 MHz
- Baud Rate: 512/1200/2400 bps
- Housing Size: 3.55"x9"x.63"

PART NUMBER	DESCRIPTION	
6510		

## CELLULAR MESSAGING MODULE (CMM)

### FEATURES



- Allows you to send messages (SMS) to cellular telephones and other SMS compliant devices
- Can be connected to the Alarm Dispatch Module
- Connect the CMM to fire alarms and send SMS alerts direct to officers carrying cell phones; connect to electrical equipment for maintenance alerts and more
- Once connected with valid SIM card, the CMM is designed to need no more intervention from the user

PART NUMBER	DESCRIPTION	
9455R	CMM-Rack Mount 850/1900 Band	

## UHF Paging TRANSMITTER



**6212**

### FEATURES

- Synthesized Paging Transmitter
- Scope, Comp2, TAP (ID=Capcode), Comp1,ESPA,TEKK
- Direct/RS232 buffered serial port
- Connect to other modules in Fusion series
- Up to 100% Duty Cycle
- USB Port
- Rugged extruded aluminum case

PART NUMBER	DESCRIPTION	
6212	5 watt UHF Transmitter	

## **EVENT MANAGEMENT MODULE-Base Package**

Includes 4 Concurrent User Client Licenses– 100

Recipient Licenses & POCSAG Output Port

Maximum capacity of 3 ports + 1 TAP

or telephony port



### **FEATURES**

- Base package contains a central data base for up to 10,000 individual and group contacts. Provides easy access up to 100 commonly used text messages and also displays the status for messages recently sent and received through the system

PART NUMBER	DESCRIPTION	
9454	EMMR-Rack Mount Module	
9454D	Event Management Module-Desktop/Wall Mount	
9465E	EMM-Email Interface	
9466	EMM-Generic Interface	
9467	EMM-Tap Interface	

## EMM-License Upgrades

### FEATURES



- THE ALARM DISPATCH MODULE (ADM) is capable to taking data from various resources such as Nursecall and building management systems to security and fire alarms.
- Connecting multiple ADMs via RS485 lets you expand the number of opto-coupled or dry contact inputs on your system to provide the ideal messaging solution.
- PC PAGING: use a simple Windows user interface to configure the software; easy to set up and use.
- Multilingual capabilities, plug and play unit setup and complete control over configuration to make getting connected trouble-free.

PART NUMBER	DESCRIPTION	
9485	EMM-5 Additional Concurrent Client User Licenses	
9476	EMM-100 Additional Recipient Licenses	
9477	EMM-500 Additional Recipient Licenses	
9478	EMM-1000 Additional Recipient Licenses	
9452	Alarm Dispatch Module-Rack Mount-Contact Closure	
9453	Alarm Dispatch Module-Rack Mount-Opto Coupled	

## MAXPAGE

### FEATURES



- 2 to 4 watt switchable transmitter
- 999 pager capacity
- Operate with voice pagers, flash & vibrate coasters, alphanumeric pagers with optional software
- Voice prompted telephone (PABX) interface (optional)
- Backlit 32 character LCD display and keypad
- 4 dry contact alarm point inputs

PART NUMBER	DESCRIPTION	
5500	MAXPage UHF Standard Alphanumeric Transmitter Includes Antenna & Internal Power Supply	
	<i>Options Available for MAXPage Standard</i>	
5510	Telephone Interface-PABX Port	
5520	MAXPage Serial Interface for MP Standard includes serial cable	
5530	Alphanumeric Keyboard Port-Keyboard not included	
5541	MAXPage Voice Paging for MAXPage	

## Z-100 TRANSMITTER

Now Compatible with Jeron Nurse Call Systems



### FEATURES

- 2or 5 Watt Paging Transmitter w/RS232 nine pin serial port
- Supports TAP, Comp1, Comp2 & Scope Protocol
- PC Programming available
- 999 Pager Capacity
- Compatible with Jeron Nurse Call.

PART NUMBER	DESCRIPTION	
1166	Includes Antenna, Power Supply & Serial Cable	

## Z-500 ALPHANUMERIC TRANSMITTER

### FEATURES



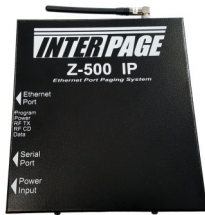
- Economical, eliminates wide are paging service fees
- Integrate with NurseCall Systems
- Long range campus wide coverage (2/5 watt system provides up to 2 mile coverage, depending upon terrain)
- Supports alphanumeric, numeric, and tone only messages
- Supports paging RF data rates of 512, 1200, and 2400 bps
- Industry capability using the TAP, Scope, Comp 1 & Comp 2 protocols serial data interface
- Pager database can be programmed into on-board EEPROM using Windows based programming software, included with each system

PART NUMBER	DESCRIPTION	
6200-9	Includes Antenna, Power Supply & Serial Cable	



## Z-500 IP ETHERNET PORT A/N TRANSMITTER

### FEATURES



- Ethernet Port—Supports 2 TCP/IP Connections
- Serial RS-232 Com Port
- Supports TAP,COMP1,Comp2, Scope, & SNPP
- Compatible with Industry Standard POCSAG Pagers
- Compatible with Nurse Call Systems: Jeron, Roam Alert, TekTone, West-Com and more.
- Simultaneous Control via Serial Port & up to 2 Ethernet Socket Connections

PART NUMBER	DESCRIPTION	
6200-IP	Includes Antenna, Power Supply & Serial Cable	

## UHF 5W AMPLIFIER

### FEATURES



- UHF Only (440-470MHz)
- 12.5 KHz Channel Spacing NB
- Input Connector: BNC Female
- Output Connector: BNC Male
- Comes with Coax Jumper and 12vDC Power Supply

PART NUMBER	DESCRIPTION	
1167	5 Watt Amplifier	

## EIGHT (8) DRY CONTACT ALARM PAGING SYSTEM



### FEATURES

- 8 Programmable dry contacts
- Alerts pagers in under 2 seconds
- Powerful on-board 5 Watt Transmitter
- Mounting Brackets, power supply & antenna included

PART NUMBER	DESCRIPTION	
1175L	EIGHT (8) DRY CONTACT ALARM PAGING SYSTEM	

## AMPLIFIER

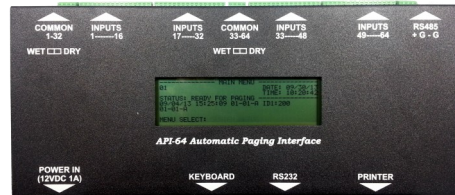


### FEATURES

- Frequency: 450-512 MHz
- Bandwidth: 20 MHz
- Power Inputs: 3-5 Watts
- Power Output: 50-100 Watts
- Current Draw: 26 Amps
- Duty Cycle: 50 Percent
- Connectors: “N” type Female
- Size: 5(H) x 19(W) x 15(D)

PART NUMBER	DESCRIPTION	
5710	50 Watt Amplifier	
5715	100 Watt Amplifier	
5812	175 Watt Amplifier	
5716	Power Supply for 50 and 100 Watt Amplifiers	

## ALARM MONITORING SYSTEM

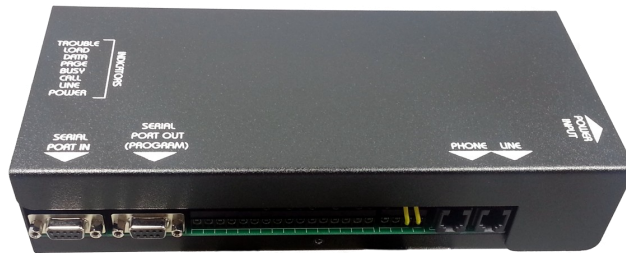


### FEATURES

- **D/V-64** is a **Text Messaging Device** that monitors Information from critical operating systems and machines and delivers it to people who need it.  
**Dry Contact / Wetted Voltage Inputs:**
- D/V-64 is equipped with 64 dry or wetted voltage inputs. User defined messages of up to 80 characters are sent to a designated message receiver when there is a status change on any of the inputs.
- **Critical System Information and Events** are delivered to widely available and well accepted wireless messaging tools. Users of portable messaging devices such as pagers, cell phones. Information can also be received on electronic display boards (LED).

PART NUMBER	DESCRIPTION	
<b>6300</b>	D/V-64 Alarm Monitoring System	
<b>6301</b>	D/V-64EM Expanded Units-64 points each (as extensions of Maser Unit D/V-64)	
	The expansion modules may be connected to the main unit to increase the quantity of inputs up to 1,024 points Expansion modules are connected via a 3 wired RS-485 connection	
<b>6302</b>	D/V-64RM Connection to Master Unit for dialing to remotely located paging terminal	

## ALARM MONITORING SYSTEM



### FEATURES

- **D/V-8/232** is a text messaging device that monitors information from critical operating systems and machines, and delivers it to the people who need it.
- The D/V-8/232 is equipped with 8 dry contact or wetted voltage input. User defined messages of up to 80 characters are sent to a designated message receiver when there is a status change on any of the input.
- Users of portable messaging devices such as pagers, Cell Phones can receive information from monitored systems while they are mobile

PART NUMBER	DESCRIPTION	
6303	D/V -8/232 Printer Port Paging Interface	

## SILENT PAGE TONE



### FEATURES

- Up to 1 mile radius
- 899 Pager Capacity
- Large Backlight LCD Display
- Sends Alerts to Pagers or Coasters

PART NUMBER	DESCRIPTION	
1162A	SilentPage I Tone/VibeTransmitter	
1162PS	AC Adapter/Power Supply	
1164	SilentPage II Numeric Transmitter	
1164D	SilentPage II NumericTransmitter w/Telephone Interface (DTMF)	

## SILENTPAGE PAGE ALPHA



### FEATURES

- Send custom text messages
- 99 canned messages
- 7 dry contacts for quick paging of Alarm Panels, Machinery, Doors, etc.

PART NUMBER	DESCRIPTION	
1165	SilentPage Alpha Transmitter w/	

## ANTENNAS (mounting hardware not included)



### 77' DB GAIN ANTENNA TECHNICAL DATA:

- Max. Input Power: 250 Watts
- Bandwidth >1.5 VSWR: 10
- Flexible Extension: Jumper w/N Male N Female (Optional)
- Overhall Length: 6.4 feet
- Wind Velocity Rated: 100 MPH
- Wind Load: .35 sq. ft.
- Finish: Aluminum
- Lightning Protect: DC Grounding
- Lateral Thrust @RWV: 12.6 lds.
- Weight: 4 lbs

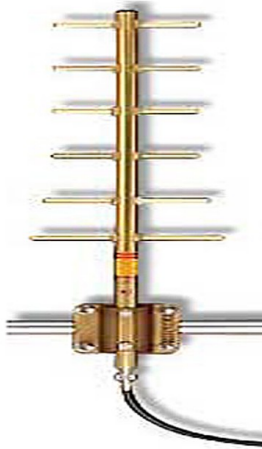


PART NUMBER	DESCRIPTION	
3100	UHF 1/4 wave antenna	
3401	UHF 1/2 wave, 2.5 dB gain, 8" Flexible, BNC Connector	
3403	77" 5 dB gain antenna	
3404	Exterior Bracket to fit 77" antenna	
3408	12" Interior Wall Mounting Bracket for 77" Antenna	
3405	Base Omni, Unity Antenna @450-479 Freq.	
LITARR	Lightning Arrestor	
	Other Antennas Available Depending on Application- Call for pricing	
	<b><u>ANTENNA CABLES</u></b>	
LMR-195	LMR 195-15 ft. cable with fittings	
LMR-600	LMR 600 Shielded Cable \$4.00 Per Foot + \$50.00 for connection fittings	
4402	Male to Male Gender Changer	
HCC5	Hardline Copper Clad 7/8" Thick Cable \$6.50 Per Foot for connection fittings	

## YAGI ANTENNA

### FEATURES

#### YAGI ANTENNA TECHNICAL DATA:



- Mounting:\_\_\_\_\_Stainless Steel
- Elements:\_\_\_3/8" diameter solid 6061-T6
- Finish: \_Protective Gold or Black anodized finish
- Max. Power: 300 watts
- VSWR: \_<1.5:1
- db Gain:\_\_\_7.1
- Impedance:\_\_\_50ohms
- Mounting Power: \_\_\_\_\_Up to 1-5/8" mast
- Tuning:\_\_\_\_\_Pre-tuned on a network analyzer
- Termination Type:\_\_\_N female
- Boom Length:\_\_\_3 Element-20-3/16"  
6 Element-44"
- Wind Survival:\_\_\_\_\_100 MPH

PART NUMBER	DESCRIPTION	
3407	Includes mounting hardware	



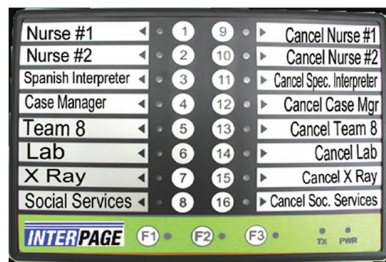
## 16 BUTTON MEDICAL/HOSPITALITY STAFF OR EXAM ROOM STAFF PAGING SYSTEM



### FEATURES

- The UHF Medical & Hospitality Staff Call System was designed to help staff operate much more efficiently and provide better customer service

Staff Paging System



### FEATURES

- Was designed to help medical staff operate much more efficiently and provide more effective staff communication
- Staff is immediately alerted in under 2 seconds when a button is pressed beside their name
- Also sends messages to wireless LED Signs

Exam Room Staff Paging System

PART NUMBER	DESCRIPTION	
7900	SEE ABOVE PICTURES	

## 16 BUTTON STAFF CALL PAGING SYSTEM



### FEATURES

- 16 button on-Site Paging System is designed to directly page staff in under 2 seconds
- The individual call button features can transmit an alert to a single pager or group of pagers
- Mounting brackets, power supply & antenna included

## 9 BUTTON STAFF CALL PAGING SYSTEM



### FEATURES

- 9 Button on-site paging system is designed to directly page staff in under 2 seconds
- The individual call button features can transmit an alert to a single pager or group of pagers
- Mounting brackets, power supply & antenna included

PART NUMBER	DESCRIPTION	
8920	16 BUTTON STAFF CALL PAGING SYSTEM	
8900	9 BUTTON STAFF CALL PAGING SYSTEM	

## PORTABLE SILENTPAGE TRANSMITTER

### FEATURES



- Are a one touch solution to alert an alphanumeric or numeric pager instantly
- Portable Wireless Transmitters comes in 4-button and 8-button models
- Each button is programmed to send a specific preprogrammed message to a pager
- The preprogrammed messages can be as long as 130 alpha or 2000 numeric characters



PART NUMBER	DESCRIPTION	
1160A	Portable Wireless Transmitter-1 Button	
1160B	Portable Wireless Transmitter-4 Button	
1160C	Portable Wireless Transmitter-8 Button	
1160D	Programmer (Optional)	

## WATER RESISTANT WIRELESS PENDANTS

### FEATURES



- PLL Frequency: 410-490MHz. 1 Channel Crystal controller
- Water resistant up to 10M (32.81ft)
- Baud rate: 512bps/1200bps/2400bps
- Message: Numeric and Alphanumeric (Max 40 character)
- RF output: 10mW (+10.0db)
- Battery: Type-CR-2450; Last 1yr (10 TX per day)
- Programming I/O: via Micro USB with P/C
- Size: 1.45" x .67"
- Housing Color: Black
- Product Weight: (with battery) .85oz

PART NUMBER	DESCRIPTION	
1840	Wireless Pendant with Necklace (1-50)	
	Wireless Pendant with Necklace (51 or more)	
1845	Wireless Wrist Watch Pendant (1-50)	
	Wireless Wrist Watch Pendant (51 or more)	
1818	Programming Software includes Micro USB Cable (Optional)	

## WIRELESS PENDANTS



### FEATURES

- Frequency: 410-490MHz. 1 Channel Crystal controller
- Baud rate: 512bps/1200bps/2400bps
- Message: Numeric and Alphanumeric (Max 40 character)
- RF output: 10mW (+10.0db)
- Battery: Type-23A Alkaline battery
- Programming I/O: via USB with P/C
- Size: 3.15" x 1.65" x .071"
- Housing Color: Black
- Product Weight: (with battery) 1.12oz

PART NUMBER	DESCRIPTION	
2018L	Wireless Pendant with Necklace (1-50)	
	Wireless Pendant with Necklace (51 or more)	
2018H	Wireless Pendant Wall Mount (included)	
2218	Programming Software includes USB Cable (Optional)	
2680	Wireless Repeater	



## PAGING DATA RECEIVER (OPTIONAL)

### FEATURES



- PDR APPLICATIONS: Message Monitoring & Printing, Data Transfer, Nurse Call
- Text search and replace
- Relay control by message or individual by cap code
- Time and date stamping of messages
- Parallel printer output
- Serial data port (2 optional)
- External antenna on BNC connector
- Power Requirements: 12 volt DC
- Very large number of cap codes (>2000)
- Physical (provisional) 8.66 x 2.76 x 1.18 inches
- Battery backed real time clock

PART NUMBER	DESCRIPTION	
814DR	The Paging Data Receiver is multi-function Paging Receiver capable of receiving paged messages and Processing them in a variety of ways.	
	It is able to print messages direct to a parallel or serial printer or output the message data via a serial port.	
812PR	<b>PROGRAMMING SOFTWARE KIT W/ CABLES</b> -Paging Printer      -Paging Logger to PC	
814S	<b>MESSAGING LOGGING &amp; FILTERING SOFTWARE (SINGLE USER)</b> -Reporting ability of incoming calls -Report can be transported via email to an address at a specified time	
813S	<b>MESSAGING LOGGING &amp; FILTERING SOFTWARE (5 USER)</b>	

## NUMERIC PAGERS



## FEATURES

- |   |                             |
|---|-----------------------------|
| • Large LCD Display, 12 digits and 10 icons                                 |                             |
| • 6 message memories, 25 digits per memory, total 400 digit memory capacity |                             |
| • Time stamp (12/24), week day and month (calendar) display function        |                             |
| • 10 tones & melodies in alert function                                     | * Auto/off function         |
| • Three sets of alarm clock timer setting                                   | * Vibration alarm function  |
| • Duplicate message indication  | * Silent receiving Function |
| • Unread message indication (every 10 minutes)                              | * Low battery indication    |
| • Option to delete individual messages or erase all                         | * Dimensions: 35x50x18mm    |
| • Message stamp function  | * Weight: 40g (w/o battery) |
| • Illuminating backlight for easy night reading                             | * Message stamp function    |
| • Available in VHF 138-174 MHz and UHF 410-510MHz                           |                             |

PART NUMBER	DESCRIPTION	
2807	HORNET v2 Top Read Button Programmable Numeric Pager 1 to 24	
2172	HORNET Battery Cover	

## REC-10 RECHARGEABLE NUMERIC PAGER



### FEATURES

- Top Read
- Slide Switch, Select Beep, Vibration, or Off
- Loud Buzzer, Strong Vibration
- AA Battery
- 16 Memory Slots
- Back-light Display
- Slide Switch, Select Beep, Vibration Alert
- Date & Time Display
- \* Reminder Alert
- \* Low Battery Indicator
- \* Display 12 Digits
- \* Lithium Battery Backup
- \* Memory Retention
- \* Selective Erase All
- \* Message Lock
- \* Message Time Stamping

PART NUMBER	DESCRIPTION	
2165	REC10 Rechargeable Numeric Pagers	
2165CH	REC10 Charger Rack (hold 10 pagers)	



**ALPHANUMERIC PAGERS**  
**ENTERPRISE**



## FEATURES

- Unread message reminder alert every 3 minutes
- Battery voltage measuring function \* Low Battery Alert
- Date & Time Stamping of message \* Date and Time Display
- Duplicate message indication \* Message Lock Function
- Option to delete individual message or erase all \* Alarm function
- Selectable alert mode, 4 kinds of beep tones, 10 kinds of melodies, vibration and silent
- Smart LCD screen that displays 112x32 dots
- Automatic power on/off (silent receiving)

PART NUMBER	DESCRIPTION	
2190	Enterprise 2/4 Line Button Programming Pager	
2188	Battery Cover	
2187H	Holster for Enterprise A/N Pager w/Lens Cover	
2186	ENTERPRISE Programmer (Optional)	

## Gold Alphanumeric Pager Emerald IV Alphanumeric Pager

### FEATURES



Gold Alphanumeric  
Pager

- 4 lines, 84 alphanumeric one page display
- 16 memory slots
- Reminder Alert/Zoom Feature
- Selective PC or Hand Programming
- Intrinsically Safe



\*\*NEW PRODUCT\*\*

Emerald IV Rechargeable  
Alphanumeric Pager

- 4or 8 Line Alpha Display (user selectable)
- 500 Characters per message
- 32 Message memory
- Manually programmable
- Rechargeable (optional)

PART NUMBER	DESCRIPTION	
2871	Gold Alphanumeric Pager-Intrinsically Safe	
2871H	Gold A/N Pager Holster	
2871PR	Gold A/N Programmer (Optional)	
2901	Emerald IV-4 or 8 Line Rec. Alphanumeric Pager (\$109 with reg. AA battery)	
2901CC	Emerald IV Single Charging Base	
2901PR	Emerald Programmer/Software (Optional)	

## Diamond IP67 Rated 4 or 8 Line Alphanumeric Pager Big Z-200 Desktop/Vehicle Pager

### FEATURES

- **IP67 Rated, Water & Dust Resistant**
- **Antibacterial Plastic Housing**
- **Single & Multi Unit Charging Base**
- **OLED Display** (View messages in any light)
- Date and Time Stamping of message
- Duplicate message indication
- Unread message indication (every 10 minutes)
- Option to delete individual messages or erase all
- Automatic power on/off (silent receiving)
- Improved more durable plastic housing
- Selectable alert mode, 4 kinds of beep tones, 10 kinds of Melodies, vibration and silent
- Pocsag/Synthesized
- Adjustable Volume, Loud Buzzer
- 6 Keys Operation, User Friendly Interface



**\*\*NEW PRODUCT\*\***  
**Diamond Alphanumeric Pager**

- \* Message Lock Function
- \* Low battery alert
- \* Alarm function



**Big Z-200**

PART NUMBER	DESCRIPTION	
<b>2905</b>	Diamond IP67 Rated Alphanumeric Pager (Price includes Single Unit Charging Base)	
<b>2905MC</b>	Multi Unit Charging Base	
<b>2905CC</b>	Single Unit Charging Base	
<b>2010</b>	Big Z-200 Desktop/Vehicle Pager	

## VOICE/TONE RECHARGEABLE PAGERS



### FEATURES

- Single or Dual Channel Option
- IP 54 Specification Protection from Rain & Dust
- Wideband & Narrowband Capable
- 8 Minutes Stored Voice Memory
- 4 Programmable Tone & Vibrate Alerts
- Function Mode Announcement
- Priority Scan, Normal Scan, Silent Scan Function)
- User Programmable Tone for Different Addresses
- Standard Desktop Charger Base
- Optional Amplified Charger Base
- \* 4 Position Selector Knobs
- \* Channel Monitor Function
- \* Silent receiving Function
- \* Low battery Alert
- \* Earphone Jack
- \* Synthesized

PART NUMBER	DESCRIPTION	
2873	Talk-1 Tone/Vibrate Pager	
2874	Charging Base for Talk-1	
2885	Talk-2 Tone/Voice Pager	
2886	Charging Base for Talk-2	
2886CA	Talk-2Amplified Charger (not shown)	

## WIRELESS LED PAGER DISPLAY SIGNS



### FEATURES

- Ideal for NurseCall, Commercial, and Industrial Applications such as hotels, office lobbies, shopping malls, theaters, factories, warehouses & churches.
- The LED Display signs receive messages like a standard pager.
- Send Custom Alphanumeric Messages automatically from NurseCall Systems, Emergency Alert Systems & Alarm Panels. Use Inter Page's Enterprise 101 Software to send a message from any PC.
- Use Inter Page's SilentPage Alpha Desktop Transmitter with keyboard to send alpha messages to any LED sign up to a one mile open air range.
- Selectable scroll speeds \* Internal Clock (Option)
- Memory will hold up to 24 messages
- Selectable audio alert for each message

PART NUMBER	DESCRIPTION	
1343LED	17" Numeric Wireless LED Display	
4413PR	LED Programming Software w/Serial Cable	
4513LED	52" A/N Wireless LED Display 6-3/4" High	
4413LED	28" A/N Wireless LED Display 6-3/4" High	
4413REL	28" A/N Wireless LED Display 6-3/4" High w/Relay	

## Z-15 COASTERS



### FEATURES

- Tone, Vibrate & 14 Flashing LEDs
- Uses 1 AAA Ni-MH Rechargeable Batteries
- 6 Capcode Addresses
- Over the air “Off” Command
- Dimensions: 4.20” diameter x 0.60” depth
- Charging Base-(Holds 15 coasters)
- Weight: 4.09oz w/batteries

PART NUMBER	DESCRIPTION	
2898	Z-15 uhf Coaster/Rechargeable & Stackable	
2899C	Z-15 Coaster Charging Base (15 coaster capacity) w/Power Supply	
2899PR	Z-15 Coaster Programmer w/Software (Optional)	

## Z20 COASTERS

### FEATURES

- Tone, vibrate, and 13 LED flashing alert
- Programmable length and type alerts
- Each charger can charge up to 20 coasters (optional)
- 4 addresses (with 4 functions per address)
- Programmable alert type
- Over the air “off”
- TWO LED (Heartbeat, Alert, Out of range, low battery) Ni-MH rechargeable battery
- Synthesized or crystal type
- Business card space to insert advertisement. The coaster will be turned off and charging at the same time when it is put in any slot of the desk charger and turn on automatically when it is picked up
- Each coaster charger can be extended with multiplication. One adapter can be used for 4 desk chargers maximum.



PART NUMBER	DESCRIPTION	
2894	Z20 UHF Coaster-VHF	
2896B	Z20 Coaster Charger (20 coaster capacity)	
2898BC	Z20 Coaster Battery Cover w/screws	
2898PS	Z20 Coaster Charger Power Supply	
2894Case	Z20 Coaster Case	

## PADDLE PAGERS

### FEATURES

- Tone, vibrate, and flashed (6 LED) alert
- Each adapter can hold up to 10 Paddle Pagers
- Each adapter can connect up to 4 chargers (option)
- 4 addresses (with 4 functions per address)
- Over the air “off”
- Programmable Alert Type
- Ni-MH Rechargeable battery
- Synthesized
- Guest paging
- PC Programmable
- Advertisement Area Available



PART NUMBER	DESCRIPTION	
<b>2199</b>	Paddle Pager with rechargeable batteries	
<b>2199C</b>	Paddle Pager charger stand with power adapter	
<b>2199P</b>	Programmer	
	<b><u>Charger</u></b>	
	One Desk Charger for 10 paddle pagers	
	Extend with additional chargers	
	One adapter can be used for desk chargers	
	Pager will turn off and charge at the same time when it is put in any slot of the desk charger and will turn on automatically when it is picked up.	



## THREE BUTTON TABLE CALL TRANSMITTER



### FEATURES

- Power Supply: DC 12V/Battery...Battery life approx 10 months or 3,000 button presses
- Transmission distance: Approx 984ft open air (Increase range with the opt. repeater)
- Size: 2.50" x 0.66"
- Freq. 433.92 MHz
- Display: 2 Digit number from 00 to 99
- Rolling display lasts 10 uncanceled calls
- Adjustable volume
- Size: 6.60" x 9.75" x 0.91"

PART NUMBER	DESCRIPTION	
3810	3 BUTTON CALL TX: CALL, BILL & CANCEL BUTTONS	
3800	LED RECEIVER	

## CALL BUTTON BASE



### FEATURES

- Menu Board or Ad Holder with Base to hold call button
- Size: 4.00" x 4.75" x 2.36"

## REPEATER FOR TABLE CALL



### FEATURES

- Will lengthen distance of the calling range for the 3 button transmitter by approx. 1 mile

PART NUMBER	DESCRIPTION	
3825B	CALL BUTTON BASE	
3830	REPEATER FOR TABLE CALL	

## WRIST RECEIVER



### FEATURES

- Shows 4-digit number from 0001 to 9999
- Shows different service type with calling number
- Will show time when on standby
- Stores 10 calls and can track the calls up and down
- Rechargeable battery

PART NUMBER	DESCRIPTION	
3820	WRIST RECEIVER	

**UHF Transmitters, Antennas,  
Receivers and Pagers carry a  
limited Manufacturer's Warranty  
against defects for one (1) year  
including parts & labor.**



**CALL 800-992-1000 x103 OR  
772-247-7899**

**FAX: 772-266-9783**

**EMAIL: [sales@iplp.com](mailto:sales@iplp.com)**

**WEB: [www.iplp.com](http://www.iplp.com)**

**PRODUCT CATALOG**